

Triangolo & Tamburo

FOLLIE DI DONNA

Walzer

Durata circa 19'50"
Grado 4.5

Amilcare Ponchielli (1834 - 1886) Op. 122
Versione per banda sinfonica di Emiliano Gusperti

Triangolo
Tamburo

Andante moderato (♩ = 60) **poco rall.** **Walzer n° 1** (♩ = 200)

6 **14** **5** **3** **4**

1-14 *15-19* *21-24* *pp*

26 **12** *29-40* *pp*

6 *45-50* *pp* *mp*

56 *p* *pp* *mp*

63 *p* *pp* *1.*

70 *2.* **1** **Walzer n° 2** *f*

78 *pp*

85 *1.* *2.* **3** *89-91* *pp* **3** *93-95*

96

97-99 101-105 106-107

Walzer n° 3

15

109-123 125-126 *pp*

131

pp

140

141-142 147-161 *f*

162

p *mp*

168

173-180 *mp*

181

pp *mp*

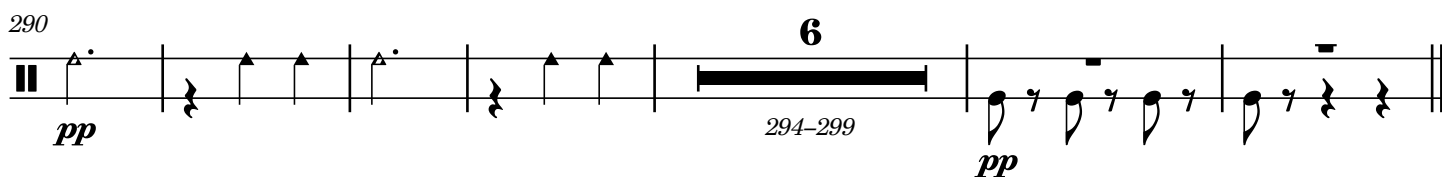
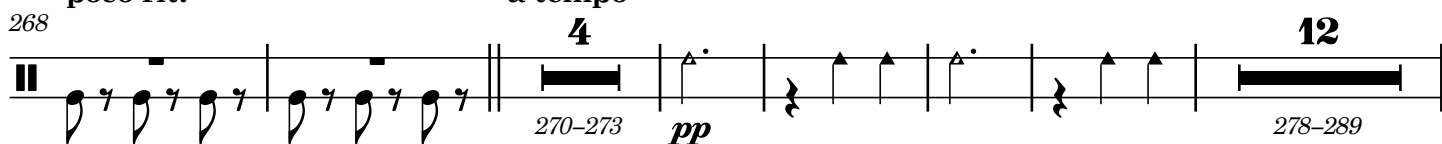
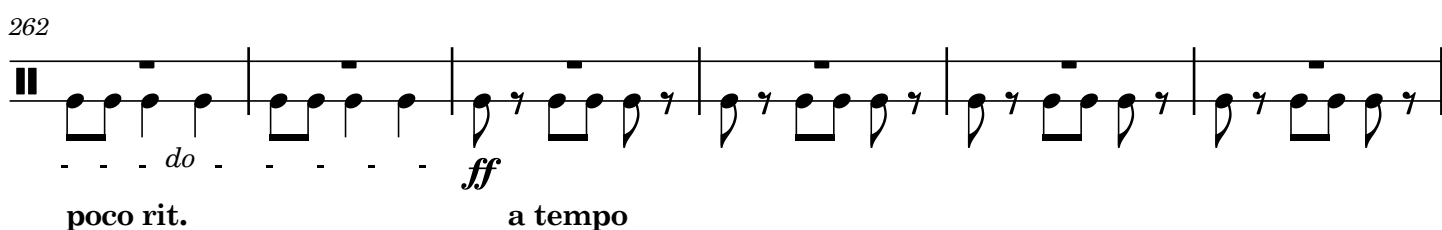
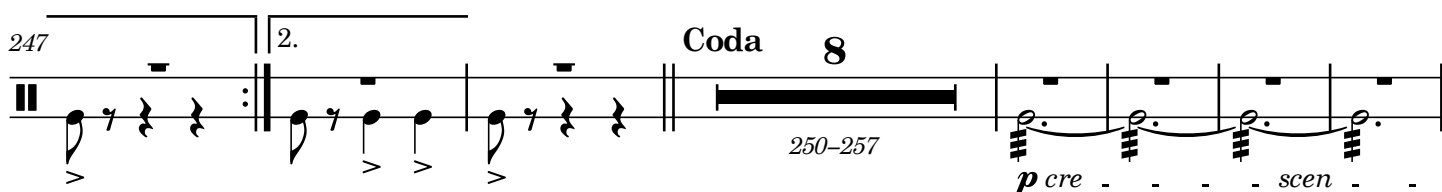
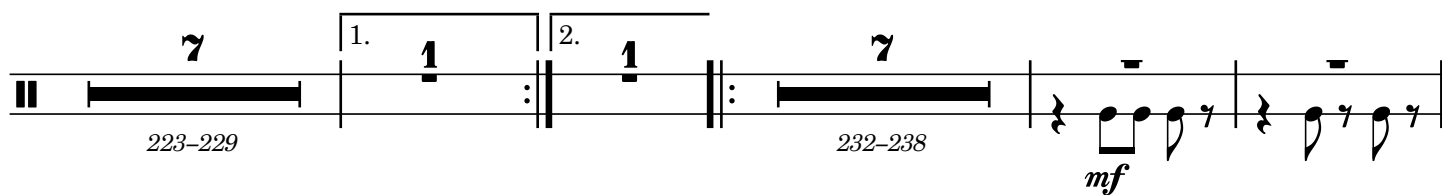
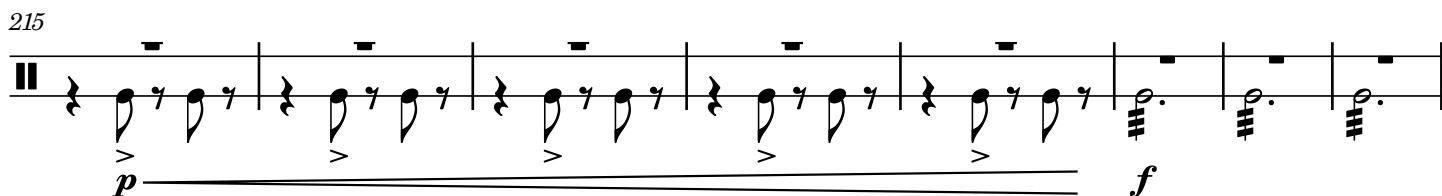
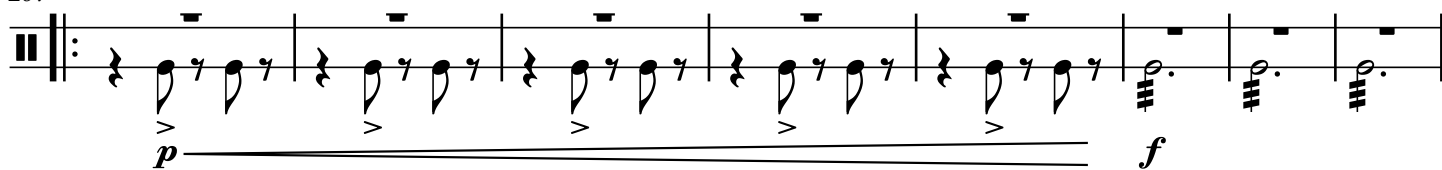
187

189-196 *pp*

200

205-206

207 Walzer n° 5



309

mp *p* *pp*

316

Valzer n° 2

f

324

pp

331

pp *pp*

334-336 338-340

341

342-344 346-351 352-359 360-363

364

stringendo

p *ff*

372

383